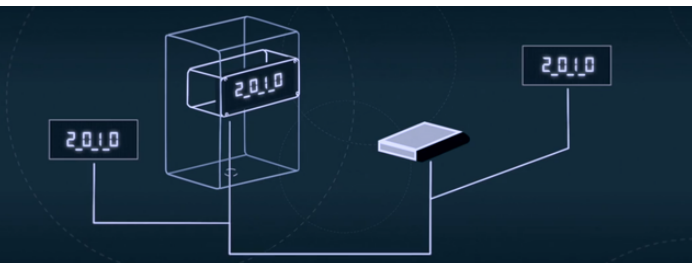


CONTROL OPTIONS

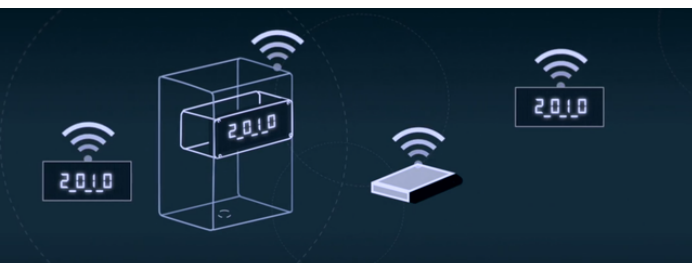
THE SYSTEM CAN BE CONTROLLED BY ALL THE MAIN POS PROTOCOLS (GILBARCO PASSPORT, WAYNE, ETC.)

DATA COMMUNICATION BETWEEN THE CONTROL UNIT AND THE DISPLAY CAN HAPPEN:

- **THROUGH DATA CABLES (RS485)**



- **WIRELESS (RF LongRange)**



MANUAL CONTROL

PRICES AND SETTINGS CAN BE SET MANUALLY WITH A 15 KEYS REMOTE CONTROL OR A WEB APPLICATION



(+39) 030 361 653
Via Luciano Manara 5bis,
25126 - Brescia, Italy
www.endelbyte.com

EB ENDELBYTE
LED PRICE SIGNS
FOR PETROL STATIONS

**MAKE YOUR BUSINESS
STAND OUT FROM THE CROWD**



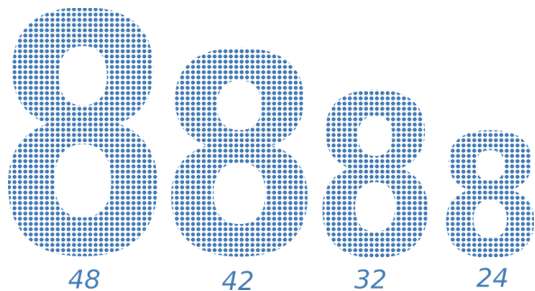
www.endelbyte.com

7-SEGMENT LED Display



- ECONOMY LINE DISPLAY
- HIGH VISIBILITY IN DIRECT SUNLIGHT
- AUTOMATIC BRIGHTNESS CONTROL
- EASILY INSTALLABLE
- MULTIPLE AVAILABLE COLORS

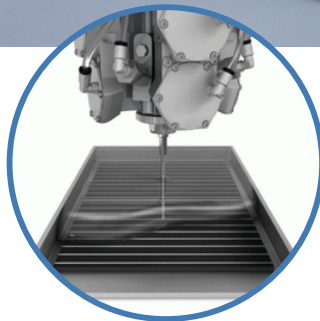
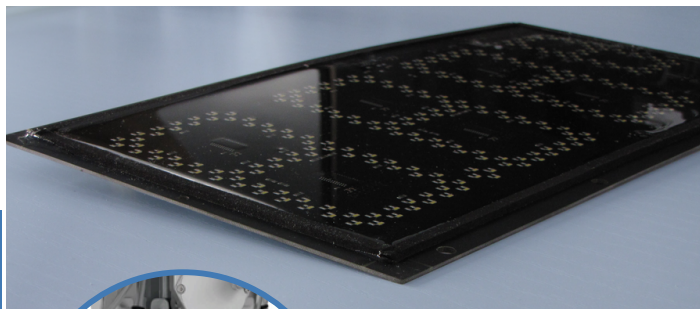
FULL GRAPHIC LED Display



- MULTIPLE SUPPORTED FONTS
- MODULAR (EACH MODULE MEASURES 32X24CM)
- 8-BIT GRAYSCALE
- MULTIPLE AVAILABLE COLORS

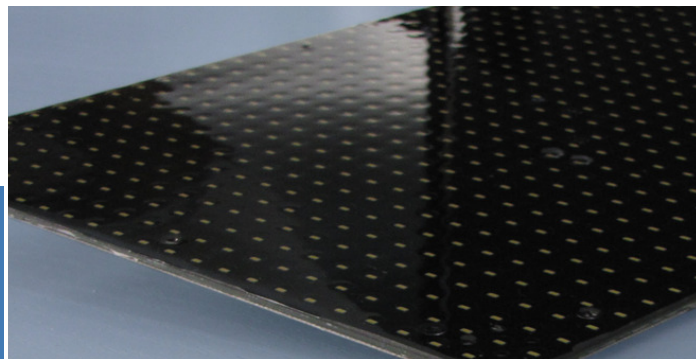


RESIN ENCAPSULATION



ALL OUR DISPLAYS ARE
ENCAPSULATED
WITH
POLYURETHANE RESIN

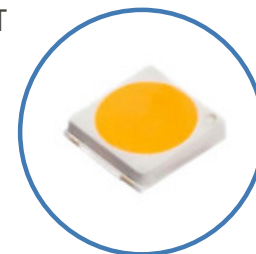
RESIN ENCAPSULATION PROTECTS AND INSULATES THE ELECTRONIC COMPONENTS FROM **HARSH ENVIRONMENTS**, MOISTURE, VIBRATION, HUMIDITY AND CHEMICALS.



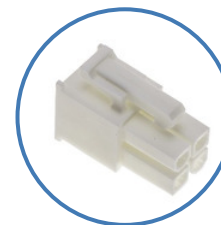
PAY ATTENTION!
OFTEN OUR COMPETITORS ONLY PERFORM *CONFORMAL COATING* WHICH PROVIDES A LOWER DEGREE OF PROTECTION

AUTOMOTIVE SMD LEDs

TO ENSURE THE LONGEST LIFESPAN OF OUR PRODUCT WE ONLY USE AUTOMOTIVE-CERTIFIED SMD LEDS



MINIFIT CONNECTORS



PAY ATTENTION!
MANY OF OUR COMPETITORS USE FLAT-CABLES AND IDC CONNECTORS WHICH PERFORM WORSE OVER TIME

PROTECTION SYSTEM

BRIGHTNESS SENSOR

THE LED DISPLAY AUTOMATICALLY ADJUSTS ITS BRIGHTNESS TO THE AMOUNT OF SUNLIGHT.



THE USE OF **HEAT DISSIPATION TECHNOLOGY** MAINTAINS THE DISPLAY AT A LOW TEMPERATURE EVEN WHEN HEATED BY SUMMER SUNLIGHT

EXTREME TEMPERATURE SAFETY

ONLY IN EXTREME HIGH-TEMPERATURE CONDITIONS THE LEDS WILL TURN OFF TO PROTECT THEMSELVES.